

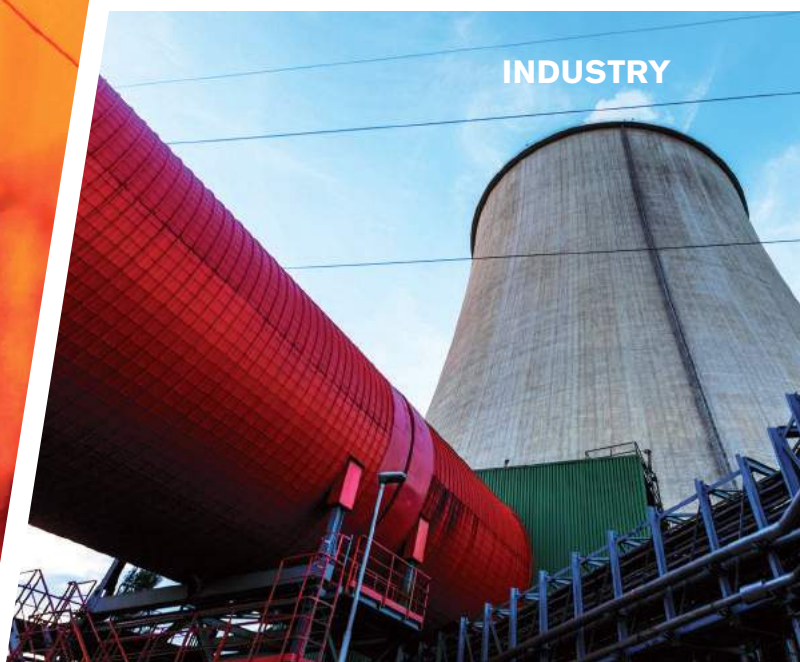
FIREFIGHTING



MARITIME



INDUSTRY



**FIREFIGHTING
MARITIME • INDUSTRY**

INTERSPIRO PRODUCT OVERVIEW



Interspiro is publishing the second edition of our Product Overview for our business areas Firefighting, Maritime and Industry.

We have selected products that are available world wide and reflect what most of our customers want. The selection is a mixture of classic and new.

The fact that Interspiro has been developing breathing apparatus since 1921 means over the years, we have learned to adapt it to suit human functioning. Adaptation can be a matter of tailoring apparatus to suit how we breathe, our backs and how we react under stressful conditions.

In consideration of the tough working conditions our customers face, Interspiro works hard to make apparatus as robust as possible. Over the course of the years, we have also received lots of confirmation that the products have a long lifetime and low repair costs.

We work towards constant improvement and to achieve this, we depend on our customers to share their opinions. Please keep telling us what you think! Your comments help us work harder and raise the bar.

CONTENT



SELF CONTAINED BREATHING APPARATUS	4
INCURVE	5
Spiromatic S8	8
Spiroguide II	12
QS II	15
QS II-R	18
Spiromatic 90U	20



FACE MASKS AND BREATHING VALVES	22
INSPIRE Mask	23
S Mask	25



CYLINDERS	28
Composite Cylinder with Aluminum Liner	30
Full Composite Cylinder with Plastic Liner	30
Steel Cylinder	30



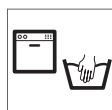
SCBA ACCESSORIES	31
SCBA Accessories	31



EMERGENCY ESCAPE EQUIPMENT	33
Spiroscape Emergency Escape Breathing Device	34
M-20.2 Emergency Escape Breathing Device	36
EBA6.5 Emergency Escape Breathing Apparatus	38



SPIROLINE AIRLINE SYSTEM	39
Spiroline MP (Medium Pressure)	40
Spiroline HP (High Pressure)	42



CLEANING AND DISINFECTION	44
Cleaning and Disinfection	44



SERVICE AND SUPPORT	45
Service and Support	45

SELF CONTAINED BREATHING APPARATUS (SCBA)

To meet the wide range of operational requirements within the fields of fire service, military, maritime and industry, Interspiro offers several Self Contained Breathing Apparatus (SCBA) systems.



INCURVE

INCURVE is a brand new SCBA with the unique harness developed together with firefighters - with every little detail in mind. Yet another innovative product from Interspiro that will change the way we look at an SCBA.

With a minimum of textile parts the INCURVE harness is easy to clean, robust and light weight - without compromising comfort.

The INCURVE SCBA can be used with single cylinder, twin cylinders or cylinder packs. Regulator choices are: Standard, Digital Display or Reserve Air Warning.



- | | |
|---|--|
| 1 A minimum of textile parts.
Light weight and easy to clean. | 5 Quick attachment of regulator unit.
No tools required. |
| 2 Non-textile shoulder straps and hip belt shapes itself to the body
and gives first class comfort. | 6 Optimized weight distribution.
Body-shaped shoulder straps and hip belt. |
| 3 Adjustable in four sizes from inside of harness.
Easy adjustment for different body size. | 7 Maximum mobility: Hip belt and shoulder straps move
independently of each other. |
| 4 Multiple attachment points for accessories.
Easy to adapt for different needs. | 8 Large rescue handle.
Easy to grab and drag out fire fighter in an emergency. |

INCURVE BASIC MODEL CONFIGURATIONS

The INCURVE Basic Model configurations include harness and regulator unit. Face mask, breathing valve and cylinders are sold separately and are not part of the part numbers listed below.

INCURVE Single Cylinder

Part No.	Description
33650-01	Standard configuration
33650-02	IS male Extra air connection
33650-03	Euro male Extra air connection
33650-04	Y-piece Extra air, Euro male/female
33651-01	Euro coupling
33651-02	Y-piece, Extra air, 2 x Euro female connectors
33651-03	Y-piece, Extra air, 2 x Euro female connectors, Long cylinder connection

INCURVE Single Cylinder, Quick Coupling

Part No.	Description
33650-01QC	Standard configuration
33650-02QC	IS male Extra air connection
33650-03QC	Euro male Extra air connection
33650-04QC	Y-piece Extra air, Euro male/female
33651-01QC	Euro coupling
33651-02QC	Y-piece, Extra air, 2 x Euro female connectors
33651-03QC	Y-piece, Extra air, 2 x Euro female connectors, Long cylinder connection
33552-01QC	Rescue hose IS
33552-02QC	IS coupling on breathing hose and rescue hose

INCURVE-E BASIC MODEL CONFIGURATIONS

The INCURVE-E Basic Model configurations include harness and regulator unit with Digital Display. Face mask, breathing valve and cylinders are sold separately and are not part of the part numbers listed below.

INCURVE-E Single Cylinder

Part No.	Description
33660-01	Standard configuration
33660-02	IS male Extra air connection
33660-03	Euro male Extra air connection
33661-01	Euro coupling
33661-02	Y-piece, Extra air, 2 x Euro female connectors

INCURVE-E Single Cylinder, Quick Coupling

Part No.	Description
33660-01QC	Standard configuration
33660-02QC	IS male Extra air connection
33660-03QC	Euro male Extra air connection
33661-01QC	Euro coupling
33661-02QC	Y-piece, Extra air, 2 x Euro female connectors

INCURVE-R BASIC MODEL CONFIGURATIONS

The INCURVE-R Basic Model configurations include harness and regulator unit with Reserve Air Warning. Face mask, breathing valve and cylinders are sold separately and are not part of the part numbers listed below.

INCURVE-R Cylinder Pack

Part No.	Description
33653-01	Rescue hose, left
33653-03	No rescue hose
33653-04	Rescue hose left, quick coupling on breathing hose

INCURVE-R Cylinder Pack, Quick Coupling

Part No.	Description
33653-01QC	Rescue hose, left
33653-03QC	No rescue hose
33653-04QC	Rescue hose left, quick coupling on breathing hose

INCURVE SYSTEM PRODUCTS

Regulator unit



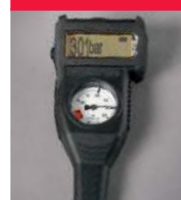
Part No.	Description
33658-01	Standard configuration
33658-02	IS male Extra Air connection
33658-03	Euro male Extra Air connection
33658-04	Euro coupling
33658-05	Y-piece Extra Air, 2xEuro female connectors
33658-06	Euro male and female Extra Air connection

Regulator unit with Cylinder Quick Coupling



Part No.	Description
33658-01QC	Standard configuration
33658-02QC	IS male Extra Air connection
33658-03QC	Euro male Extra Air connection
33658-04QC	Euro coupling
33658-05QC	Y-piece Extra Air, 2xEuro female connectors
33658-06QC	Euro male and female Extra Air connection

Regulator unit with Digital Display, without mechanical whistle



Part No.	Description
31816-01	Standard configuration
31816-02	IS male Extra Air connection
31816-03	Euro male Extra Air connection

Single or Twin Cylinders up to 6.8 L.

Regulator unit with Digital Display, without mechanical whistle, with Cylinder Quick Coupling



Part No.	Description
31816-01QC	Standard configuration
31816-03QC	Euro male Extra Air connection

Single or Twin Cylinders up to 6.8 L.

Regulator unit with Digital Display, with mechanical whistle



Part No.	Description
31817-04	Euro coupling
31817-05	Y-piece Extra air, 2xEuro female connectors

Single or Twin Cylinders up to 6.8 L.

INCURVE Harness



Part No.	Description
33550-51	Single cylinder
33530-51	Cylinder pack

Cylinder Quick Coupling



Part No.	Description
30569-51	Cylinder Quick Coupling, Regulator part
30553-51	Cylinder Quick Coupling, Cylinder valve adapter, EN144
32372-51	Protective plug for cylinder adapter

SPIROMATIC S8



Approved for
US market

SPIROMATIC S8 is the eighth generation NIOSH and NFPA approved SCBA from Interspiro. It combines the latest electronic developments, a new harness concept and the proven performance of the Spiromatic-S series 1st stage regulator, 2nd stage breathing valve and the unique S Mask with ambient air hatch.

The S8 is available with two different supply pressures: High Pressure (HP) with 4500 psi and Low Pressure (LP) with 2216 psi. The HP version can be equipped with the optional Cylinder Quick Coupling (QC).

All S8 configurations include an integrated Personal Alert and Safety System (PASS) and a Rapid Intervention Connection (RIC), which allows rapid refilling of cylinders under emergency conditions.

The S8 is equipped with a medium pressure buddy breathing system to connect two SCBAs together.



1 Integrated PASS and SCBA computer with 360° lights. High visibility and powerful sound SCBA computer protected under cylinder.

2 SpiroGuide Digital Display. Powerful backlight PASS status indicators and easy operation buttons.

3 Simple, Proven S Mask Design. Secure, integrated second stage regulator.

4 Ambient air hatch with instant-on air. High performance breathing.

5 Wireless Heads-Up Display (HUD). Easy installation in mask.

6 Adjustable in four sizes from inside of harness. Easy adjustment for different body size.

7 Robust and comfortable harness. Optimal weight distribution.

8 Large rescue handle. Easy to grab and drag out fire fighter in an emergency.

SPIROMATIC S8 SCBA CONFIGURATIONS

The Spiromatic S8 SCBA configurations are delivered assembled and tested. The configurations include harness, regulator unit and face mask (unless otherwise stated). Cylinders are sold separately and are not part of the part numbers listed below.



Approved for
US market

Spiromatic S8 HP

Part No.	Description
32662-01	S8 HP with Buddy Breathing and telemetry cable
32665-01	S8 HP with Buddy Breathing, QC and telemetry cable

Spiromatic S8 LP

Part No.	Description
32666-01	S8 LP with Buddy Breathing and telemetry cable

Spiromatic S8 HP - without Mask

Part No.	Description
33670-01	S8 HP with Buddy Breathing and telemetry cable, without mask
33671-01	S8 HP with Buddy Breathing, QC and telemetry cable, without mask

FACTS

SCBAs used in the US must be certified by the National Institute for Occupational Safety and Health (NIOSH) under “42 CFR [Code of Federal Regulations] Part 84”.

In addition, SCBAs used for firefighting are also certified by the National Fire Protection Association (NFPA) under the standard 1981, which includes testing against Chemical, Biological, Radiological and Nuclear (CBRN) threats.

SPIROMATIC S8 SYSTEM PRODUCTS



Approved for
US market

4500 psi SuperLight Carbon Fiber Cylinders



Part No.	Description
99694-01	30 minutes
99694-01QC	30 minutes, QC
99695-01	45 minutes
99695-01QC	45 minutes, QC
99696-01	60 minutes
99696-01QC	60 minutes, QC

2216 psi Cylinders



Part No.	Description
95806	30 minutes, carbon fiber
95624-01	30 minutes, aluminum

S8 Face Mask with 2nd Stage, By-Pass and HUD



Part No.	Description
33800-711	Small size with Spironet head harness
33800-701	Small size with rubber head harness
33801-711	Medium size with Spironet head harness
33801-701	Medium size with rubber head harness
33802-711	Large size with Spironet head harness [Standard size]
33802-701	Large size with rubber head harness
33803-711	Extra Large size with Spironet head harness
33803-701	Extra Large size with rubber head harness

Harness



Part No.	Description
31370-51	S8 Harness

Rapid Intervention Team (RIT) Drag Bag



Part No.	Description
97289-01	Rescue Pac

Cylinder Quick Coupling



Part No.	Description
30569-51	Regulator part
31232-51	Cylinder valve adapter, CGA connection
32372-51	Protective plug for cylinder adapter

SPIROMATIC S8 ACCESSORIES



Approved for
US market

S8 Mask



Part No.	Description
32800-711	Small size with Spironet head harness
32800-701	Small size with rubber head harness
32801-711	Medium size with Spironet head harness
32801-701	Medium size with rubber head harness
32802-711	Large size with Spironet head harness [Standard size]
32802-701	Large size with rubber head harness
32803-711	Extra Large size with Spironet head harness
32803-701	Extra Large size with rubber head harness

Spectacle kit



Part No.	Description
336890493	Spectacle kit for Face mask

Breathing Valve



Part No.	Description
99080-01	S8 Breathing valve (2nd stage) with By-Pass

Heads-Up Display (HUD)



Part No.	Description
31062-51	Wireless Heads-Up Display (HUD)

Face Mask Holder



Part No.	Description
31383-51	Face mask holder, 10 pack

Filling Adapter for Cylinder Quick Coupling



Part No.	Description
31602-01	Cylinder Quick Coupling, Filling adapter, CGA connection

Test Adapter



Part No.	Description
95991-01	S Fit test adapter with filter (for testing according to OSHA CFR 1910.134)
336800168	Spare HEPA filter for fit test adapter

Mask Bag



Part No.	Description
96484-51	Face mask storage bag

SCBA Case



Part No.	Description
96036-01	SCBA case

SPIROGUIDE II

SPIROGUIDE II combines the latest electronic developments, a harness concept and the proven performance of the Interspiro pressure regulator and breathing valve. SpiroGuide II is available with or without a mechanical warning whistle and in versions for single cylinder, twin cylinders or cylinder pack.

It can also be equipped with the optional Cylinder Quick Coupling (QC). An automatic motion and panic alarm (ADSU/PASS) is integrated in the SCBA. Several department selectable settings are available to adapt the SpiroGuide for different applications.

To further improve safety, an automatic start-up test communicates that the SCBA is safe to use, and all events and usage data are logged to be subsequently downloaded and viewed on a computer after the mission.



- | | |
|---|---|
| <p>1 Easy adjustment to body size. Large rescue handle.</p> <p>2 Robust and comfortable harness with optimal weight distribution.</p> <p>3 BA Computer (BAC) protected under cylinder. High visibility lights and powerful sound.</p> <p>4 Wireless Heads-Up Display (HUD) inside the face mask gives continuous indication of cylinder pressure and low air alarms as well as PASS status.</p> | <p>5 Optional mechanical warning whistle.</p> <p>6 Motion sensor and buttons for ADSU/PASS built into digital display unit.</p> <p>7 SpiroGuide digital display with powerful backlight. Department selectable displays include: Cylinder pressure in bar, Remaining air time, Absorbed temperature, Turn back signal.</p> |
|---|---|

SPIROGUIDE II SCBA CONFIGURATIONS

The SpiroGuide II SCBA configurations are delivered assembled and tested. The configurations include harness, regulator unit and face mask. Cylinders are sold separately and are not part of the part numbers listed below

SpiroGuide II without mechanical whistle

Part No.	Description
31810-01	Standard configuration
31810-01QC	Cylinder Quick Coupling

Single or Twin Cylinders up to 6.8 L.

SpiroGuide II without mechanical whistle, HUD

Part No.	Description
31810-02	Euro male Extra Air connection
31810-02QC	Euro male Extra Air connection, Cylinder Quick Coupling

Single or Twin Cylinders up to 6.8 L.

SpiroGuide II with mechanical whistle, CH



Part No.	Description
32680-01	Euro coupling, S Mask with Hatch and helmet clips
32680-02	Euro coupling, S Mask with Hatch and Spironet
32680-03	Euro coupling, S Mask with Hatch and rubber head harness
32681-01	Euro coupling, S Mask with First breath and helmet clips
32681-02	Euro coupling, S Mask with First breath and Spironet
32681-03	Euro coupling, S Mask with First breath and rubber head harness
32682-01	Euro coupling, S-ESA Mask with helmet clips
32682-02	Euro coupling, S-ESA Mask with Spironet
32682-03	Euro coupling, S-ESA Mask with rubber head harness

Only available for the Swiss market.
Single or Twin Cylinders up to 6.8 L.

SPIROGUIDE II BASIC MODEL CONFIGURATIONS

The SpiroGuide II Basic Model configurations are delivered assembled and tested. The configurations include harness and regulator unit. Face mask, breathing valve and cylinders are sold separately and are not part of the part numbers listed below.

SpiroGuide II with mechanical whistle

Part No.	Description
31811-01	Euro coupling
31811-02	Y-piece Extra air, 2 x Euro female connectors

Single or Twin Cylinders up to 6.8 L.

SpiroGuide II with mechanical whistle, CH



Part No.	Description
31812-01	Euro coupling, CH version

Only available for the Swiss market.
Single or Twin Cylinders up to 6.8 L.

FACTS

There are two different methods to activate the integrated motion alarm. It either activates automatically as a result of cylinder pressure or it is activated by pulling out a "tally key" from the unit. If the tally key option is chosen, the key must be re-inserted to cancel an alarm.

SPIROGUIDE II SYSTEM PRODUCTS

Regulator unit without mechanical whistle

Part No.	Description
31816-01	Standard configuration
31816-02	IS male Extra Air connection
31816-03	Euro male Extra Air connection
Single or Twin Cylinders up to 6.8 L.	



Regulator unit without mechanical whistle, QC

Part No.	Description
31816-01QC	Standard configuration
31816-03QC	Euro male Extra Air connection
Single or Twin Cylinders up to 6.8 L.	



Regulator unit with mechanical whistle

Part No.	Description
31817-04	Euro coupling
31817-05	Y-piece Extra air, 2xEuro female connectors
Single or Twin Cylinders up to 6.8 L.	



Regulator unit for cylinder pack

Part No.	Description
31249-01	Standard configuration
31249-03	Cylinder Quick Coupling



Heads-Up Display (HUD)

Part No.	Description
31062-51	Wireless HUD



Harness

Part No.	Description
31350-51	Single cylinder
31360-51	Twin cylinders
31330-51	Cylinder pack



Cylinder Quick Coupling

Part No.	Description
30569-51	Cylinder Quick Coupling, Regulator part
30553-51	Cylinder Quick Coupling, Cylinder valve adapter, EN144
32372-51	Protective plug for cylinder adapter



QS II

QS II is a product platform based on high performance system products that can be adapted for different needs. The harness concept is combined with the proven performance of the Interspiro pressure regulator and breathing valve.

To ensure optimal comfort for different body lengths, the harness can easily be adjusted, even when the cylinder is attached and when the SCBA is mounted in a fire truck.

The QS II is available for single cylinder, twin cylinders and cylinder pack. It can also be equipped with the optional Cylinder Quick Coupling (QC).



1 Maximum mobility: Hip belt and shoulder straps move independently of each other.

2 Wide range of face mask variants.

3 Easy adjustment to body size. Large rescue handle.

4 Small and lightweight warning whistle.

5 Easy to maintain plug-in pressure regulator.

6 Optimized weight distribution with body-shaped hip belt.

QS II SCBA CONFIGURATIONS

The QS II SCBA configurations are delivered assembled and tested. The configurations include harness, regulator unit and S face mask. Cylinders are sold separately and are not part of the part numbers listed below.

QS II SCBA for Single Cylinder

Part No.	Description
31800-01	Standard configuration
31800-02	IS male Extra air connection
31800-03	Euro male Extra air connection
31800-05	T-piece Extra air, Euro male/female

QS II SCBA for Single Cylinder, QC

Part No.	Description
31800-01QC	Standard configuration
31800-02QC	IS male Extra air connection
31800-03QC	Euro male Extra air connection

QS II SCBA for Twin Cylinders

Part No.	Description
31800-04	IS male Extra air connection

QS II SCBA for Single Cylinder, CH



Part No.	Description
32670-01	Euro coupling, S Mask with Hatch and helmet clips
32670-02	Euro coupling, S Mask with Hatch and Spironet
32670-03	Euro coupling, S Mask with Hatch and rubber head harness
32671-01	Euro coupling, S Mask with First breath and helmet clips
32671-02	Euro coupling, S Mask with First breath and Spironet
32671-03	Euro coupling, S Mask with First breath and rubber head harness
32672-01	Euro coupling, S-ESA Mask with helmet clips
32672-02	Euro coupling, S-ESA Mask with Spironet
32672-03	Euro coupling, S-ESA Mask with rubber head harness

Only available for the Swiss market.

QS II BASIC MODEL CONFIGURATIONS

The QS II Basic Model configurations are delivered assembled and tested. The configurations include harness and regulator unit. Face mask, breathing valve and cylinders are sold separately and are not part of the part numbers listed below.

QS II Basic Model for Single cylinder

Part No.	Description
31801-01	Euro coupling
31801-02	Y-piece, Extra air, 2 x Euro female connectors
31801-02L	Y-piece, Extra air, 2 x Euro female connectors, Long cylinder connection
31805-02	IS Extra air
31805-02QC	IS Extra air, cylinder quick coupling
31805-03	Euro Extra air
31805-06QC	IS Extra air, rescue hose, cylinder quick coupling
31805-07QC	IS coupling on breathing hose and rescue hose, cylinder quick coupling

QS II Basic Model for Twin Cylinders

Part No.	Description
31801-03	Y-piece, 2 x Euro female connectors
31801-04	Euro coupling

QS II Basic Model, CH



Part No.	Description
31802-01	Euro coupling
31802-02	SuperPASS holder
31802-03	Y-piece, Euro male/female

Only available for the Swiss market.

QS II SYSTEM PRODUCTS

Regulator unit



Part No.	Description
31808-01	Standard configuration
31808-02	IS male Extra Air connection
31808-03	Euro male Extra Air connection
31808-04	Euro coupling
31808-05	Y-piece Extra Air, 2xEuro female connectors
31808-06	Euro male and female Extra Air connection
31808-07	For cylinder pack, standard configuration
31808-08	For cylinder pack, IS Extra Air

Regulator unit with Cylinder Quick Coupling



Part No.	Description
31808-01QC	Standard configuration
31808-02QC	IS male Extra Air connection
31808-03QC	Euro male Extra Air connection
31808-04QC	Euro coupling

Harness



Part No.	Description
31350-51	Single cylinder
31360-51	Twin cylinders
31330-52	Cylinder pack, Spiromatic regulator

Cylinder Quick Coupling



Part No.	Description
30569-51	Cylinder Quick Coupling, Regulator part
30553-51	Cylinder Quick Coupling, Cylinder valve adapter, EN144
32372-51	Protective plug for cylinder adapter

FACTS

To reduce fatigue on the part of the wearer, the majority of the weight should be carried on the waist, not on the shoulders. The body-shaped waist belt and easy adjustment of the QS II harness make correct fitting easy.

QS II-R

QS II-R combines a new harness concept with the proven performance of the Interspiro reserve air warning. Together with the Spirolite Cylinder pack and the integrated rescue hose this is a complete high specification SCBA for firefighting.

To ensure optimal comfort for different body lengths, the harness can easily be adjusted, even when the cylinder is attached and when the SCBA is mounted in a fire truck. The QS II-R can be equipped with the optional Cylinder Quick Coupling (QC).



1 Easy adjustment to body size. Large rescue handle.

2 Reserve air warning unit with Extra Air connection.

3 Wide range of face mask variants.

4 Cylinder pack gives optimal weight distribution and low profile.

5 Maximum mobility: Hip belt and shoulder straps move independently of each other.

6 Optimized weight distribution with body-shaped hip belt.

QS II-R BASIC MODEL CONFIGURATIONS

The QS II-R Basic Model configurations are delivered assembled and tested. The configurations include harness and regulator unit with reserve air warning adapted for cylinder pack. Face masks, breathing valves and cylinder packs are sold separately and are not part of the part numbers listed below.

QS II-R Basic Model

Part No.	Description
31803-01	Rescue hose, left
31803-03	No rescue hose
31803-04	Rescue hose left, quick coupling for breathing hose

QS II-R Basic Model, Cylinder Quick Coupling

Part No.	Description
31803-01QC	Rescue hose, left
31803-03QC	No rescue hose
31803-04QC	Rescue hose left, quick coupling for breathing hose

QS II-R SYSTEM PRODUCTS

Regulator Unit with Reserve Air Warning

Part No.	Description
96425-04	Rescue hose, left
96425-04QC	Rescue hose, left, Cylinder Quick Coupling
96425-02	No rescue hose



Harness

Part No.	Description
31330-51	Cylinder pack, QS-R



Cylinder Quick Coupling

Part No.	Description
30569-51	Cylinder Quick Coupling, Regulator part
30553-51	Cylinder Quick Coupling, Cylinder valve adapter, EN144
32372-51	Protective plug for cylinder adapter



SPIROMATIC 90U

SPIROMATIC 90U is a basic breathing apparatus for firefighting, and it is excellent for industrial and maritime environments. The pressure regulator (1st stage regulator) is identical to that used in other SCBA series from Interspiro. The harness is equipped with padded shoulder straps and easy-to-adjust hip belt buckles.

The Spiromatic 90U configurations are CE approved according to European product standards and approved according to the Marine Equipment Directive ("ship wheel mark"). They are delivered as SCBA configurations including face mask or as basic models excluding the face mask and breathing valve.

The Spiromatic 90USA-S configurations are NIOSH approved according to U.S. product standards. The 90USA-S is delivered with the S face mask, and is available in one high pressure (HP) version for 4500 psi and one low pressure (LP) version for 2216 psi.



1 Padded shoulder straps with integrated hose holders.

3 Carrying handle.

2 Easy to maintain plug-in pressure regulator.

SPIROMATIC 90U CONFIGURATIONS

The Spiromatic 90U configurations are delivered assembled and tested. Cylinders are sold separately and are not part of the part numbers listed below. Refer to page 30 for cylinder options.

Spiromatic 90U SCBA, including S Mask

Part No.	Description
32110-01	Ambient air version
32110-02	Ambient air version, Euro male Extra air connection
32110-03	First breath version
32110-04	First breath version, Euro male Extra air connection
32110-05	Ambient air version, IS Extra air connection
32110-06	First breath version, IS Extra air connection

Spiromatic 90U Basic Model, excluding Mask and Breathing Valve

Part No.	Description
99220-02	Standard configuration
99220-01	Euro coupling
99220-04	IS Extra air connection

Spiromatic 90U Harness

Part No.	Description
30630-01	Standard configuration

SPIROMATIC 90USA CONFIGURATIONS

The Spiromatic 90USA SCBA configurations are delivered assembled and tested. The configurations include harness, regulator unit and face mask. Cylinders are not part of the Spiromatic 90USA item numbers.



Approved for
US market

Spiromatic 90USA-S with S Mask

Part No.	Description
30137-01	HP
30137-04	HP, Airline connector
30137-50	LP
30137-53	LP, Airline connector

Spiromatic 90USA Harness

Part No.	Description
346190350	Standard configuration

Spiromatic 90USA Cylinders

Part No.	Description
95624-01T	LP, Aluminum, 30 min
95806T	LP, Carbon Fiber, 30 min
99694-01T	HP, Carbon Fiber, 30 min
99695-01T	HP, Carbon Fiber, 45 min
99696-01T	HP, Carbon Fiber, 60 min

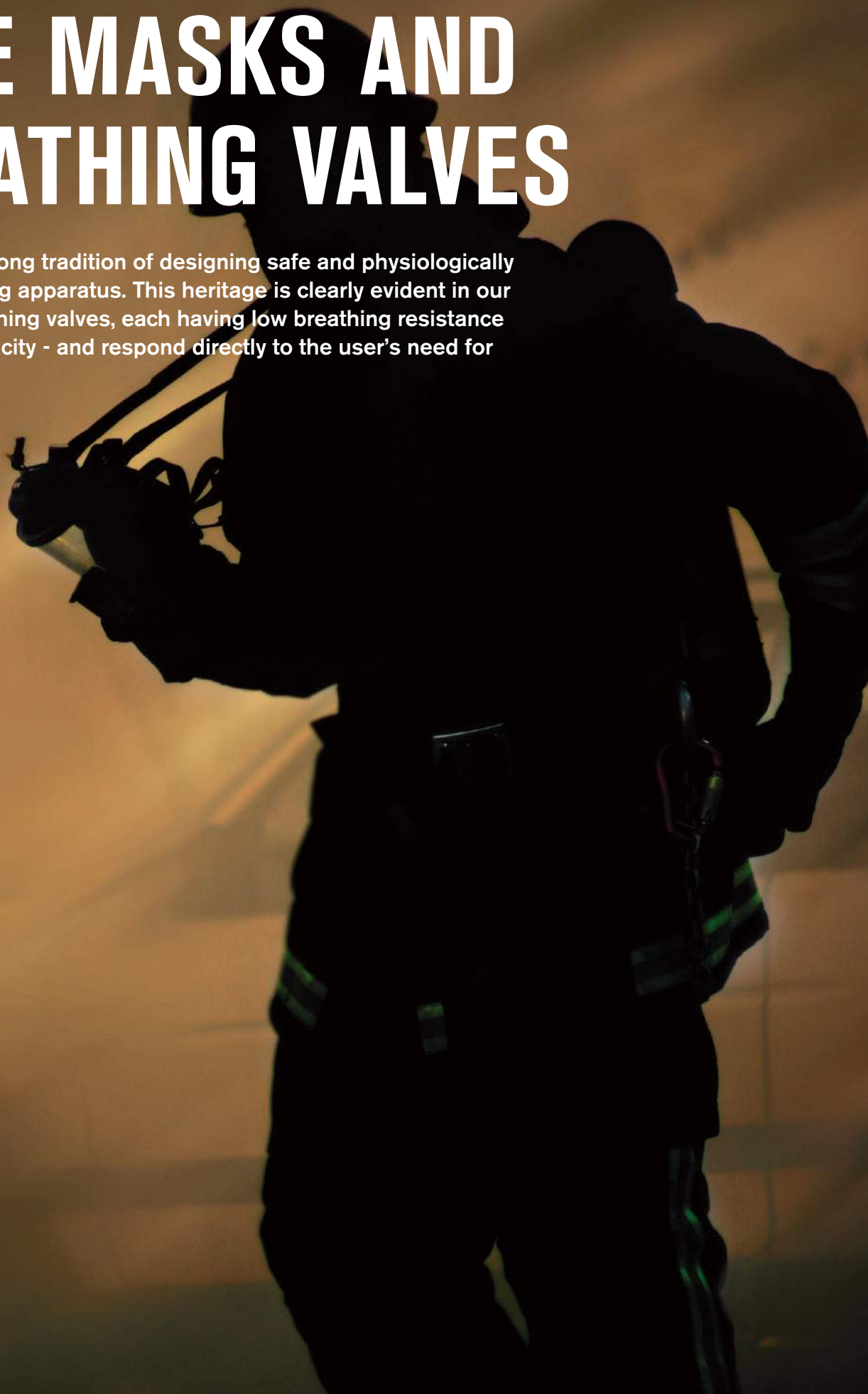
FACTS

EN137 is the European product standard for Self Contained Breathing Apparatus. It includes two types of classification; "Type 1" for industrial use and "Type 2" for firefighting. SCBAs from Interspiro are always classified as "Type 2", suitable for firefighting applications. A "Type 2" approval also gives a "Type 1" approval.

SCBAs used in the U.S. must be certified by the National Institute for Occupational Safety and Health (NIOSH) under "42 CFR [Code of Federal Regulations] Part 84". The connection between SCBA and cylinder is according the CGA (Compressed Gas Association) standard.

FACE MASKS AND BREATHING VALVES

Interspiro has a long tradition of designing safe and physiologically adapted breathing apparatus. This heritage is clearly evident in our masks and breathing valves, each having low breathing resistance and high air capacity - and respond directly to the user's need for air.



INSPIRE MASK

The INSPIRE Mask takes all the outstanding features from the S Mask and adds the quick connection. Open the ambient air hatch or disconnect the breathing valve to breathe ambient air, both options will close the breathing valve automatically to ensure that no air will be lost.

The INSPIRE Breathing Valve is a positive pressure valve with a plug-in connection to the face mask. The design of the valve supplies air only while inhaling, with instantaneous response to workload differences.



1 Quick connection of breathing valve to the face mask

2 Breathing valve closes automatically when disconnected from face mask

3 Demand controlled Breathing valve activated from inner mask – Very good breathing performance with quick response time

4 Available with ambient air hatch, or without hatch.

5 Prepared for voice communication, "Heads-Up Display" and spectacle kit

6 Ergonomic head harness. Easily operated buckles

7 Mask made of natural rubber, some models also available in silicone

8 Mask available in three sizes

INSPIRE MASK

The INSPIRE mask is available in two models: INSPIRE-H with ambient air hatch and INSPIRE-A without hatch.

INSPIRE-H Mask with ambient air hatch, incl. Breathing Valve



Part No.	Description
33808-1110	Standard size (Medium)
33808-2110	Small size
33808-3110	Extra Large size (XL)
33808-4110	Silicone, Standard size
33858-1110	For helmet adapter, Standard size

INSPIRE-H Mask with ambient air hatch, excl. Breathing Valve



Part No.	Description
32808-1110	Standard size (Medium)
32808-2110	Small size
32808-3110	Extra Large size (XL)
32808-4110	Silicone, Standard size
32858-1110	For helmet adapter, Standard size

INSPIRE-A Mask incl. Breathing Valve



Part No.	Description
33808-1100	Standard size (Medium)
33808-2100	Small size
33808-3100	Extra Large size (XL)
33808-4100	Silicone, Standard size
33858-1100	For helmet adapter, Standard size

INSPIRE-A Mask excl. Breathing Valve



Part No.	Description
32808-1100	Standard size (Medium)
32808-2100	Small size
32808-3100	Extra Large size (XL)
32808-4100	Silicone, Standard size
32858-1100	For helmet adapter, Standard size

INSPIRE MASK ACCESSORIES

Breathing Valve



Part No.	Description
33420-01	Breathing Valve

Filter Adapter



Part No.	Description
33430-01	Filter adapter

Breathing Hose



Part No.	Description
460190362	Euro male, 90°
460190364	Union nut, 90°
99835-01	Euro male, straight
336190287	Union nut, straight

Holder for Voice Communication System



Part No.	Description
460200050	SpiroCom attachment bracket with screw and washer
336190306	IS-Com attachment bracket with screw and nut

Hair Net



Part No.	Description
460190352	Hair net
95612-51	Hair net, version for helmet adapter mask

Spectacle kit



Part No.	Description
336890493	Spectacle kit for face mask

Storage Bag



Part No.	Description
96484-51	Face mask storage bag

Mask Bag



Part No.	Description
331950280	Mask bag
999000514	Mask bag, with strap

S MASK

The S Mask is comfortable and reliable, designed with Interspiros outstanding safety pedigree and innovative approach. The inner mask separates inhaled and exhaled air to minimize the danger of breathing exhaled carbon dioxide.

The S Breathing Valve is a positive pressure valve with a secure connection to the face mask. The design of the demand valve supplies air only while inhaling, with instantaneous response to workload differences.



1 Ergonomic head harness

2 Easily operated buckles

3 Prepared for voice communication, "Heads-Up Display" and spectacle kit

4 Mask made of natural rubber, some models also available in silicone

5 Mask available in three sizes (not all models)

S MASK

S Mask Ambient Air Hatch, incl. Breathing Valve



Part No.	Description
31820-01	Standard size
31820-02	Small size
31820-03	Extra Large size (XL)
31820-04	Silicone, Standard size
31820-05	Standard size, By-pass valve

S Mask First Breath Activation, incl. Breathing Valve



Part No.	Description
31821-01	Standard size
31821-02	Small size
31821-03	Extra Large size (XL)
31821-04	Silicone, Standard size

S-PE Mask with M45x3 connection



Part No.	Description
31265-01	Standard size
31265-02	Small size
31265-03	Extra Large size (XL)

S-ESA Mask with Quick Connection (DIN 58600)



Part No.	Description
31266-01	Standard size
31266-02	Small size
31266-03	Extra Large size (XL)

S-N Mask with M45x3 connection



Part No.	Description
31264-01	Standard size
31264-02	Small size
31264-03	Extra Large size (XL)

S Mask Ambient Air Hatch, excl. Breathing Valve,



Part No.	Description
31262-01	Standard size
31261-01	Small size
31263-01	Extra Large size (XL)
31262-02	Silicone, Standard size

S Mask First Breath Activation, excl. Breathing Valve



Part No.	Description
31262-04	Standard size
31261-03	Small size
31263-03	Extra Large size (XL)
31262-05	Silicone, Standard size

S Mask for Helmet adapter, incl. Breathing Valve



Part No.	Description
96300-02	Ambient air hatch
96300-29	First breath Version

S Mask for Helmet adapter, excl. Breathing Valve



Part No.	Description
95070-04	Ambient air hatch
95070-23	First breath version
97326-02	Ambient air hatch, including Gallet helmet adapter
99995-04	S-PE mask
30116-04	S-ESA mask
99996-04	S-N mask

Helmet Adapter for Gallet Helmet

Part No.	Description
336900280	Helmet adapter
31784-51	Adjustable helmet adapter
33352-01	Pre-delivery mounting of helmet adapter

336900280



31784-51



S MASK ACCESSORIES

S Breathing Valve



Part No.	Description
95080-12	Ambient air hatch
95080-14	First breath activation
96237-01	Dust cap (not shown)

S Breathing Valve with By-pass



Part No.	Description
99080-02	Ambient air hatch
99080-03	First breath activation
96237-01	Dust cap (not shown)

S-PE Breathing Valve



Part No.	Description
99420-01	M45x3 connection
99420-02	M45x3 connection, with hose
336200622	Dust cap (not shown)

S-ESA Breathing Valve



Part No.	Description
30115-01	Quick connection according to DIN 58600
30115-03	Quick connection according to DIN 58600, with hose
30621-51	Dust cap, 10-pack (not shown)
42010655	Adapter for S-ESA face mask

S-N Breathing Valve



Part No.	Description
99890-01	Rd40 connection, normal pressure (no safety pressure)
99890-02	Rd40 connection, normal pressure, with hose
336200621	Dust cap (not shown)

Breathing Hose



Part No.	Description
460190362	Euro male, 90°
460190364	Union nut, 90°
99835-01	Euro male, straight
336190287	Union nut, straight

Holder for Voice Communication System



Part No.	Description
460200050	SpiroCom attachment bracket with screw and washer
336190306	IS-Com attachment bracket with screw and nut

Hair Net



Part No.	Description
460190352	Hair net
95612-51	Hair net, version for helmet adapter mask

Spectacle kit



Part No.	Description
336890493	Spectacle kit for face mask

Storage Bag



Part No.	Description
96484-51	Face mask storage bag

Mask Bag



Part No.	Description
331950280	Mask bag
999000514	Mask bag, with strap

CYLINDERS

The Interspiro composite cylinder with aluminum liner comes in volumes of 6.8 L or 9 L, and is available with a 15-year or 30-year service life or as Non-Limited Life (NLL) cylinders. With a wide range of cylinder valves, the cylinders can be used in different configurations ensuring optimal fit for different operational procedures.



CYLINDERS

All cylinder-to-cylinder valve connections are M18x1.5, unless otherwise stated.

A “push-to-close” safety ratchet mechanism, which prevents unintentional closing of the cylinder valve, is standard on all valves except for the in-line version cylinder valve.

The in-line version cylinder valve does not have this feature, unless safety ratchet is specifically indicated, in which case it is the “pull-to close” type.

Some models are available with an Excess Flow Valve (EFV), which limits air flow in the event of inadvertent opening or breakage.



Composite cylinder with aluminum liner
- 6.8 L or 9 L
- 15 year, 30 year or NLL
- Yellow



Full Composite cylinder with plastic liner
- 3.4 L or 6.7 L
- Single or cylinder pack
- Non-limited life
- Unpainted



Steel cylinder
- 6 L
- Yellow



1 In-line version cylinder valve, in-line hand wheel.



2 90° cylinder valve, easy to reach on single cylinders.



3 180° cylinder valve with or without pressure gauge. Suitable for twin cylinder configuration.



4 Cylinder valves with EFV are indicated with a blue hand wheel cover.

COMPOSITE CYLINDER WITH ALUMINUM LINER

Composite Cylinder with Aluminum Liner 6.8 L, 15 Year

Part No.	Description
31126-03	In-line cylinder valve
31126-02	90° cylinder valve
31126-04	180° cylinder valve, EFV, pressure gauge, burst disc, long connection

Composite Cylinder with Aluminum Liner 6.8 L, 30 Year

Part No.	Description
31127-03	In-line cylinder valve
336290830	180° cylinder valve with pressure gauge, short connection
31127-04	180° cylinder valve with pressure gauge and EFV, short connection
31127-07	In-line cylinder valve with ratchet and EFV
31127-08	90° cylinder valve



Composite Cylinder with Aluminum Liner 6.8 L, NLL

Part No.	Description
336290824	In-line cylinder valve
336290828	180° cylinder valve with pressure gauge, short connection
336291186	180° cylinder valve with pressure gauge and EFV, long connection
336291183	In-line cylinder valve with ratchet and EFV
30076-05	90° cylinder valve
30076-10	90° cylinder valve, EFV

Composite Cylinder with Aluminum Liner 9 L, 15 Year

Part No.	Description
31128-03	In-line cylinder valve
31128-02	90° cylinder valve
336291198	180° cylinder valve with pressure gauge and EFV, short connection

Composite Cylinder with Aluminum Liner 9 L, NLL

Part No.	Description
336291328	180° cylinder valve with pressure gauge and EFV, short connection
336291323	In-line cylinder valve with ratchet and EFV
30079-07	90° cylinder valve

FULL COMPOSITE CYLINDER WITH PLASTIC LINER

Spirolite Single Cylinder

Part No.	Description
98404-03	6.7 L, 90° cylinder valve
98403-08	6.7 L, 180° cylinder valve with pressure gauge and EFV, long connection
98708-01	3.4 L, 90° cylinder valve, M17x1.5



Spirolite Cylinder Pack

Part No.	Description
98422-02	2 x 3.4 L, M17x1.5 ("323.4"), with pressure gauge
98401-02	2 x 6.7 L ("326.7"), with pressure gauge



STEEL CYLINDER

6L Steel Cylinder

Part No.	Description
98832-01	In-line cylinder valve
98442-13	90° cylinder valve
336291310	180° cylinder valve with pressure gauge
336291191	In-line cylinder valve with ratchet and EFV
336291200	180° cylinder valve with pressure gauge and EFV
98442-14	90° cylinder valve with pressure gauge and EFV



SCBA ACCESSORIES

Part No.	Description
32318-51	D-ring small, 10-pack
31387-51	D-ring large, 10-pack



Part No.	Description
31380-51	Holder for Spiromatic regulator



Part No.	Description
31381-51	D-ring strap



Part No.	Description
31383-51	Face mask holder, 10 pack



Part No.	Description
31356-51	Chest strap



Part No.	Description
460190627	Cylinder distance piece
460190099	Strap holder assembly



Part No.	Description
346190322	Cylinder T-piece for QS / QS II SCBA
30030-51	Cylinder T-piece for SpiroGuide / SpiroGuide II SCBA



Part No.	Description
336290021	Breathing valve holder S-PE
336290025	Breathing valve holder S-ESA
336290019	Breathing valve holder S-N
33438-51	Breathing valve holder INSPIRE



Part No.	Description
31257-51	Y-piece, Euro male and Euro female
31257-53	Y-piece, 2 x Euro female
31257-60	Y-piece, Euro male
31257-61	Y-piece, IS male connection



Emergency Air Supply Equipment (E.A.S.E.)

Part No.	Description
32650-01	Y-piece Euro male/female with bag for 6.8 L cylinder
32650-02	Y-piece Euro male/female with bag for 6.7 L cylinder
32650-03	Y-piece Euro male/female with bag for 6.8 L cylinder w. boot
32650-04	Y-piece Euro male/female with bag for 9 L cylinder
32652-02	Y-piece Euro male/female S-N BV, bag for 6.8 L cylinder
32651-01	Y-piece Euro male/female with 6.8 L cylinder 15 year, in-line
32652-01	Y-piece Euro male/female S-N BV, 6.8 L cyl. 15 year, in-line



EVAC Evacuation Hood

Part No.	Description
32382-01	EVAC hood with 1.5 meter hose & IS connection, female
32382-02	EVAC hood with 1.5 meter hose & Euro connection, male
32382-03	EVAC hood with 1.5 meter hose & Euro connection, female
32382-04	EVAC hood with 0.8 meter hose & IS connection, male



SuperPASS II

Part No.	Description
SPII-M	SuperPASS II, non-movement alarm
336921700	SuperPASS II, non-movement and temperature alarm
336921560	Accountability key
336921653	Backplate with clip



SCBA integrated version available on request.

Part No.	Description
99369-01	Filling Adapter with nozzle, for threaded connection
31480-01	Filling Adapter with nozzle, for Cylinder Quick Coupling
460190770	Discharge plug
32427-01	Discharge plug, QC



Part No.	Description
331190831	Control pressure gauge
98562	Control pressure gauge with QC



Part No.	Description
336190208	Modification kit, SMS to DIN



Part No.	Description
336190007	Revitox with 2.5 m hose, IS connection
336190795	Revitox with 2.5 m hose, Euro female connection
31219-01	Revitox with 2.5 m hose, Euro male connection



Part No.	Description
336190038	Revitox mask with breathing valve
336190004	Revitox mask without blank cover, without breathing valve
336190025	Revitox breathing valve
336100892	Locking spring for Revitox breathing valve



Part No.	Description
336190027	Revitox hose, 2.5 m, female IS connection
336190794	Revitox hose, 2.5 m, female Euro connection
31218-01	Revitox hose, 2.5 m, male Euro connection
99026-01	Revitox adapter hose, 0.8 m, male IS connection
336190613	Adapter hose



Part No.	Description
96816	Filter IS 230 P3
96817	Filter IS 230 A2-P3
96824	Filter IS 230 A2B2E2K2-P3
336920724	Filter A2B2E2K2-HG-P3
99436-01	Filter IS 500 A2B2E2K2-HG-P3, aluminum case
336920725	Filter Type 86 A2B2E2K2-HG-P3, M45 x 3 connection



Part No.	Description
338190060	Coupling and hose for Chemical suit, IS connection with non-return valve opener
338190061	Hose for Chemical suit
338190062	Hose for Chemical suit, for QS-R



Part No.	Description
96036-01	SCBA case



Part No.	Description
346950002	SCBA soft bag



Part No.	Description
331950280	Mask bag
999000514	Mask bag, with strap
97604-51	Storage bag for Revitox mask and hose



Part No.	Description
32917-11	Cylinder cover 6.8L 15/30 years
32917-12	Cylinder cover 6.8L NNL & 6.7L
32917-13	Cylinder cover 9.0 L



Part No.	Description
95198-51	Protective plug R 5/8, brass
460190557	Plastic protective cap R 5/8, yellow, 10 pack (for threaded regulator connection)
460190551	Plastic protective cap, yellow, 10 pack (for M16 breathing valve connection)
31789-51	Protective plug for Cylinder Quick Coupling, regulator part, 10 pack
31788-51	Protective plug for Cylinder Quick Coupling, cylinder valve adapter, 10 pack



Part No.	Description
31391-51	Dust cover, male connector, Ø 10-12 mm, 10 pack
31392-51	Dust cover, female connector, Ø 22-25 mm, 10 pack

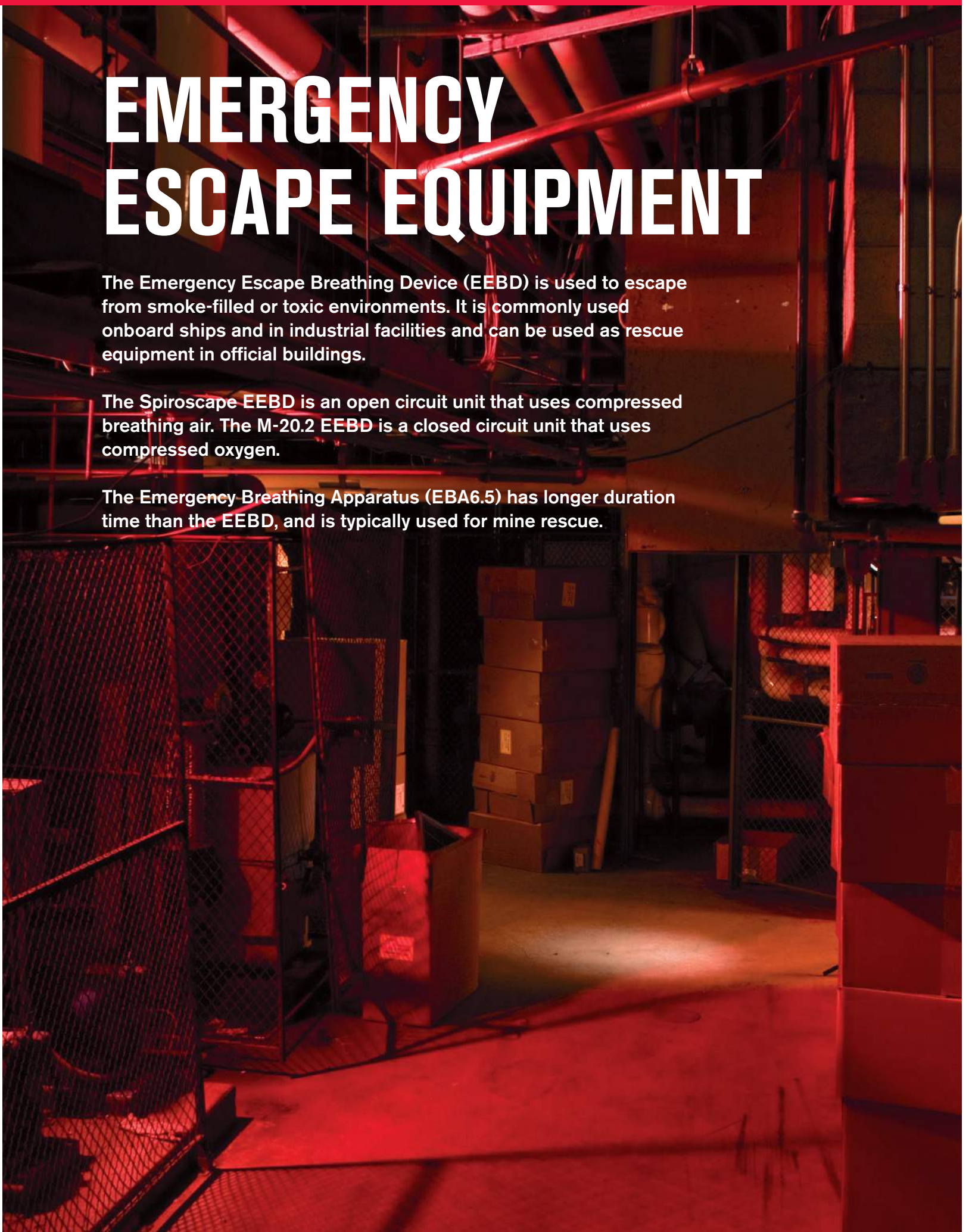


EMERGENCY ESCAPE EQUIPMENT

The Emergency Escape Breathing Device (EEBD) is used to escape from smoke-filled or toxic environments. It is commonly used onboard ships and in industrial facilities and can be used as rescue equipment in official buildings.

The Spiroscape EEBD is an open circuit unit that uses compressed breathing air. The M-20.2 EEBD is a closed circuit unit that uses compressed oxygen.

The Emergency Breathing Apparatus (EBA6.5) has longer duration time than the EEBD, and is typically used for mine rescue.



SPIROSCAPE EMERGENCY ESCAPE BREATHING DEVICE

Spiroscape is a very simple unit to use. Once donned, the user is able to focus on escape. This is made possible with the unique ambient air valve which automatically opens when the cylinder is depleted. The automatic ambient air valve eliminates the risk of suffocation inside the hood and eliminates the need to waste breathing air on a low air warning alarm.

The patented air distribution system expels Carbon Dioxide from the hood, thus optimizing air usage from the cylinder. The air flow is activated by pulling the quick start strap, which simultaneously opens the zipper on the carrying bag and gives the user access to the hood.

An anti-tamper tag verifies the integrity of the unit, and the cylinder contents gauge can easily be viewed from the outside.



1 Pressure gauge visible through clear window

4 Automatic air valve

2 Carrying strap

5 Hood with visor, inner mask and flexible neck sealing

3 Quick start strap activates unit automatically

SPIROSCAPE

The CE approved unit has a 200-bar, 3 L steel cylinder rated for 15 minutes' escape time. It can be ordered with empty or filled cylinder.

The NIOSH approved unit has a 3000-psi cylinder rated for 10 minutes' or 15 minutes' escape time.

The Spiroscape Auto-fill adapter is required to refill the cylinder from a compressor.

Spiroscape 200 bar, 15 minutes, CE approved

Part No.	Description
95300-02	Filled cylinder
95300-02EMPTY	Empty cylinder
95300-10	Composite cylinder, filled

Spiroscape Auto-fill adapter, 200 bar

Part No.	Description
95360-02	200 bar version

Spiroscape 3000 psi, NIOSH approved

Part No.	Description
95300-11	10 minutes
95300-12	15 minutes

Spiroscape Auto-fill adapter, 3000 psi

Part No.	Description
95360-04	3000 psi version



FACTS

Thanks to the automatic hatch on the Spiroscape hood, it can be kept on the user's head without any risk of suffocation, thus eliminating the need for a warning device. Furthermore, it saves breathing air and minimizes the need for user training.

M-20.2 EMERGENCY ESCAPE BREATHING DEVICE

The M-20.2 is rated for 10 minutes' escape time. The normal duration is at least 15 minutes during a maritime-based escape and at rest it can provide protection up to 32 minutes.

It can be donned in seconds and oxygen starts to flow automatically. The attached hood can be donned at any time during the escape. The compressed oxygen and mouth piece combination allows the unit to be donned in a smoke filled environment.

The M-20.2 is so compact and light weight that it can be worn on the belt in all confined spaces.

The 15-year service life gives a very low life cycle cost. Annual shipboard visual inspection is the only required action since the cylinder is not subject to periodic inspection.

The M-20.2 is the most commonly used Emergency Escape Breathing Device (EEBD) and has been selected for exclusive use by several naval organizations around the world.



1 Secondary (outer) container

2 Transparent hood for face protection (optional use)

3 Oxygen cylinder and LiOH scrubber

4 Breathing bag

5 Sealed storage box

6 Attachment for wearing the unit on a belt is integrated in the box

M-20.2 EMERGENCY ESCAPE BREATHING DEVICE (EEBD)

M-20.2 Maritime, CE Approval

Part No.	Description
940077	Standard configuration



Storage Racks and Brackets

Part No.	Description
648062	Wire storage rack
648061*	Storage rack, steel, with retaining strap
648064*	Storage rack, aluminum, with retaining strap
648066*	Multi-rack, aluminum
648060*	Multi-rack, steel

* Available on request.



M-20.2 Training Kit (including training unit)

Part No.	Description
940005	Training Kit, incl. DVD
643102	Trainer mouthpiece



FACTS

The M-20.2 does not require mandatory hydrostatic testing every five years. It can be placed on a ship for 15 years without ever leaving the ship for service. The only requirement is a visual inspection every two years by shipboard personnel, which does not require opening the M-20.2 EEBD.

EBA6.5 EMERGENCY ESCAPE BREATHING APPARATUS

The EBA6.5 supplies the wearer with more than 90 minutes of oxygen during a typical mine escape – up to 8 eight hours of oxygen at rest – performance that widely exceeds standards. The EBA6.5 uses compressed oxygen as a source rather than generating oxygen from chemicals. The oxygen content indicated on the gauge is always visible for inspection through the clear, tamper-proof sealed case.

The EBA6.5 is a highly reliable breathing apparatus, and has been tested in life-threatening situations throughout the world. Thousands are currently in service in mines in Australia, Canada, Chile, South Africa and the United States.



EBA6.5 Emergency Escape Breathing Apparatus

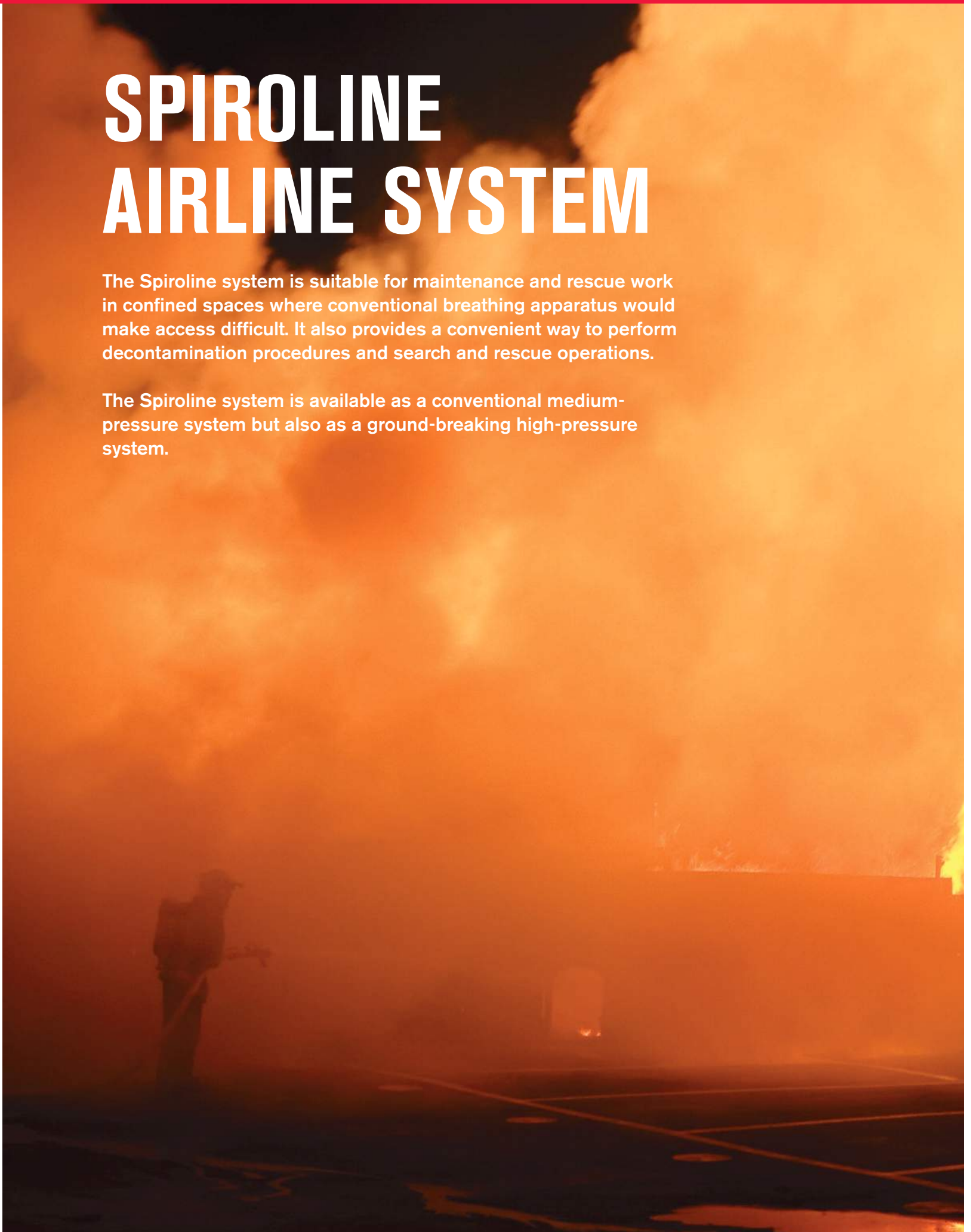
Part No.	Description
900066	CE version

Available on request.

SPIROLINE AIRLINE SYSTEM

The Spiroline system is suitable for maintenance and rescue work in confined spaces where conventional breathing apparatus would make access difficult. It also provides a convenient way to perform decontamination procedures and search and rescue operations.

The Spiroline system is available as a conventional medium-pressure system but also as a ground-breaking high-pressure system.



SPIROLINE MP (MEDIUM PRESSURE)

Spiroline MP is an airline system that supplies medium pressure to the user. A mobile and easy-to-handle TRS (Twin Regulator System) unit is used to distribute the air from air sources through the supply hose to the user. Aided by pressure gauges and warning whistles, the attendant is in control of the air supply and prepared to change the air source when necessary.



1 TRS Unit
Mobile unit with two connections for cylinders/air supplies, each with a pressure regulator, a pressure gauge and a warning whistle. Medium-pressure gauge and two connections for airline hoses.

2 Medium Pressure Supply Hose
Medium-pressure supply hose with one male and one female connection.

3 Trolley
Fits 2-4 cylinders with volume from 4 L to 9 L. Thirty-meter airline hose mounted on hose reel. Manifold with two pressure regulator, high-pressure gauges and warning whistle.

4 Spiroline Belt
Hip-worn belt with waist buckle and breathing hose to mask. Optional pressure gauge.

SPIROLINE MP (MEDIUM PRESSURE)

TRS Unit

Part No.	Description
336190560	2 x Euro connections
336190561	2 x IS connections

Trolley

Part No.	Description
1002112/CEJN	Euro connections
1002112/CEJN/QC	Euro, Cylinder Quick Coupling
1002112/IS	IS connections

Available on request.

Spiroline Regulator

Part No.	Description
336190629	2 x Euro connections
336190630	2 x IS connections



Spiroline Belt

Part No.	Description
336190621	IS male connection
336190622	IS male connection and pressure gauge
336190641	Euro male connection
336190642	Euro male connection and pressure gauge

Medium Pressure Supply Hose, IS Connection

Part No.	Description
3-6050	10 meter, IS Connection
3-6051	15 meter, IS Connection
3-6052	20 meter, IS Connection
3-6053	25 meter, IS Connection
3-6054	30 meter, IS Connection

Medium Pressure Supply Hose, Euro Connection

Part No.	Description
30105-01	10 meter, Euro Connection
30105-02	15 meter, Euro Connection
30105-03	20 meter, Euro Connection
30105-04	25 meter, Euro Connection
30105-05	30 meter, Euro Connection

QS Bail-out Unit

Part No.	Description
99224-01	IS connection
99224-02	Euro connection



FACTS

If a bail-out set without warning device is used while the cylinder valve is open, the wearer must monitor the pressure gauge throughout the mission to ensure that no breathing air is taken from the bail-out cylinder.

SPIROLINE HP (HIGH PRESSURE)

Spiroline HP is an innovative airline system that supplies high pressure all the way to the user. The air supply is a unique high-pressure supply hose with a small diameter and low weight. A 60-meter supply hose only weighs 5.3 kg and is extremely easy to handle. The hose dimension and weight make it possible to have hose lengths up to 120 meters.

The supply hose is available with a connector including warning whistle that warns the user if pressure in the air supply is disrupted. The mobile and easy-to-use distribution panel is suitable for rapid deployment in remote locations.



1 Spiroline Distribution Panel DP1
Mobile distribution panel with two connections for cylinders/air supplies. Central block with pressure gauge and warning whistle automatically switches to the air supply with the highest pressure.

2 High Pressure Supply Hose
High-pressure hose available in different lengths. Euro or IS connector. Some versions available with warning whistle.

3 Spiroline Belt
Hip-worn belt with waist buckle and breathing hose to mask. Optional pressure gauge.

SPIROLINE HP (HIGH PRESSURE)

Spiroline Distribution Panel, DP1

Part No.	Description
96710-02	Standard configuration
98980-02	Large box

High Pressure Supply Hose

Part No.	Description
96725-11	IS female connection, 60 meter
96725-31	Euro female connection, 60 meter
96725-21	Warning whistle, Euro female connection, 60 meter

Available on request.

The above hose configurations are also available in 10 m, 30 m, 90 m and 120 m lengths.

Spiroline Belt

Part No.	Description
336190621	IS male connection
336190622	IS male connection and pressure gauge
336190641	Euro male connection
336190642	Euro male connection and pressure gauge

QS Bail-out Unit

Part No.	Description
99224-01	IS connection
99224-02	Euro connection



Bail-out Fall Arrest Harness

Part No.	Description
32331-01	Fall arrest harness, incl. 2L cylinder



FACTS

A high-pressure supply system gives a considerably lighter hose, which is far easier to handle, allowing longer hose length compared to a conventional medium-pressure supply system.

CLEANING AND DISINFECTION

Cleaning Agent for Manual Wash



Part No.	Description
336921330	Curacid PSA Rinse 1L

Not available on all markets.

Cleaning and Disinfection Agent for Machine Wash



Part No.	Description
336921340	Curacid PSA TC, 5L
336921331	Curacid PSA TC, 10L

Not available on all markets.

Disinfection Agent

Part No.	Description
336921333	Curacid PSA Ultra, 1L
336921332	Curacid PSA Ultra, 5L
336921336	Curacid PSA Ultra 10L
336921335	Curacid PSA Rapid, 1L

Not available on all markets.

Cleaning Agent for Machine Wash and Manual Wash



Part No.	Description
32445-05	BA Cleaner, 5L
32445-10	BA Cleaner, 10L
32445-25	BA Cleaner, 25L

Not available on all markets.

Cleaning Agent for Manual Wash



Part No.	Description
32447-05	BA Manual Cleaner, 5L
32447-10	BA Manual Cleaner, 10L

Not available on all markets.

Dosing Equipment

Part No.	Description
33440-01	Dosing pump manual dosing

For dosing equipment for washing machines, contact Interspiro.

Other Products

Part No.	Description
336921125	Spiroclear, anti-fog fluid
336950271	Facial and hand wipes, disposable

Not available on all markets.

Sealing/Washing Plugs

Part No.	Description
31732-51	Sealing plug Spiromatic breathing valve
31731-51	Sealing plug S breathing valve
32444-51	Sealing plug S-ESA breathing valve
33438-51	Sealing plug INSPIRE breathing valve
32350-51	Sealing plug for pressure gauge, cylinder pack
33475-51	Sealing plug for pressure gauge, single cylinder
32461-51	Sealing plug for QSII whistle

SERVICE AND SUPPORT

Breathing Apparatus from Interspiro is an investment with a long service life provided it is properly maintained. Interspiro offers several service options to ensure optimal fit with your organization. A combination of these solutions can be offered to best correspond to your needs. (All service options are not available on all markets.)

SERVICE COURSES

Service courses train service technicians to perform maintenance and repairs within your organization. After attending the service course, a personal service card is issued for each individual together with a comprehensive documentation package.

SEND US YOUR EQUIPMENT

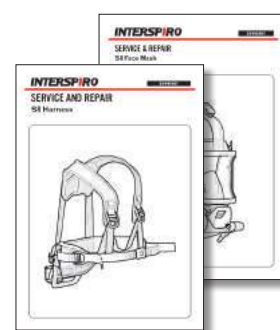
Products can be sent to Interspiro for maintenance by Interspiro service personnel at our facilities.

INTERSPIRO STATION SERVICE

Interspiro service personnel can perform service work at your location.

FULLY MANAGED SERVICE

Fully managed service at a fixed yearly cost where Interspiro handles all maintenance work.



SERVICE KITS

To simplify service and to obtain maximum product performance the Interspiro Service kits are used. These kits are available for all system products and contain all spare parts necessary to perform preventive maintenance.

A certified service technician can identify and order these service kits using the spare parts list and can perform all preventative maintenance at your location.



NOTES

[illegible]

YOUR LOCAL CONTACT

Interspiro has over 90 years of experience as a groundbreaking innovator of respiratory protection for non-breathable environments. Interspiro is a supplier of respiratory protection to defense military organizations, fire and rescue services, industries, utilities, shipping and diving companies around the world. Interspiro is an Ocenco Group company. Ocenco ranks among the world's largest respiratory protection companies.

Central Europe

AUSTRIA

Interspiro GesmbH
Fürstenfelderstrasse 35
A-8200 Gleisdorf
Austria
Tel +43 (0)311 236 133
Fax +43 (0)311 236 133 22
E-mail info@interspiro.at

GERMANY

Interspiro GmbH
Fangdieckstr. 22
D-22547 Hamburg
Germany
Tel ++49 40 300315170
Fax +49 40 3003151720
E-mail info@interspiro.de

SWITZERLAND

Interspiro AG
Güterstrasse 47
CH-4133 Pratteln
Switzerland
Tel +41 61 827 99 77
Fax +41 61 827 99 70
E-mail infoch@interspiro.com

THE NETHERLANDS

Interspiro BV
Operetteweg 35
NL-1323 VK Almere
Netherlands
Tel +31 (0)36 536 31 03
Fax +31 (0)36 538 48 09
E-mail infobv@interspiro.com

North & South America

Interspiro Inc.
10225 82nd Avenue
Pleasant Prairie, WI 53158-5801
USA
Tel +1 262 947 9901
Fax +1 262 947 9902
E-mail info@interspiro.com

United Kingdom & Ireland

Interspiro Ltd.
7 Hawksworth Road | Central Park
Telford | Shropshire TF2 9TU
United Kingdom
Tel +44 (0)1952 200 190
Fax +44 (0)1952 299 805
E-mail info@uk.interspiro.com

Sweden, Export & Asia/Pacific

Sweden & Export
Box 2853
SE-187 28 Täby
Sweden
Tel +46 8 636 51 00
Fax +46 8 636 51 99
E-mail info@interspiro.com

Interspiro Sdn Bhd
NO: 14-A, Jalan Tiara 3, Tiara
Square | Taman Perindustrian
Sime UEP | 47600 Subang Jaya,
Selangor | Malaysia
Tel +603-802 482 21
E-mail asiapacific@interspiro.com